

Krantz

Broad Multiplex Outlet BF-V...
as return air inlet

Air Distribution Systems

Krantz

Broad Multiplex Outlet BF-V as return air inlet

Preliminary Remarks

The *Broad Multiplex Outlet BF-V as return air inlet* from KRANTZ is the counterpart to the standard *Broad Multiplex Outlet BF-V* (brochure: DS 4101) designed for use with supply air. The dimensions of all three available nominal lengths and each unit's physical appearance are intentionally identical between these two types of air diffusers.

Therefore, the *Broad Multiplex Outlet BF-V* is available as a return air inlet as well as a supply air outlet as follows:

- one row or
- two rows
- Front plate: - with integrated nozzle discs (standard cover)
or
- with perforated design cover

Planning and installation are also simplified thanks to the same dimensions being used.

Sites of operation can be found in the commercial sector, e.g. in restaurants, meeting rooms, schools or offices.

Pressure loss, important for the balance of all components connected to the air distribution system, is very low, which means that fans use less power and thus reduce electricity costs.

The sound power level is also very low, so even exacting acoustic requirements for particular spaces are met.

Depending on the size, 1 or 2 connection spigots are attached to the rear of the connection box (see *Dimensions* on [page 3](#)). The connection can be made here via a flexible duct.

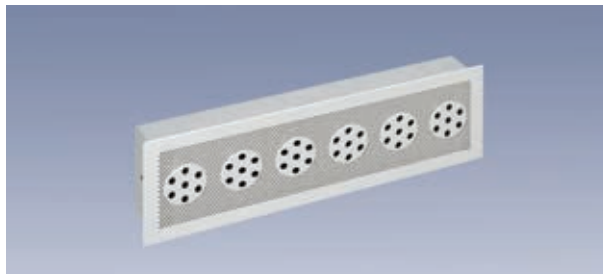


Figure 1: one row, standard cover

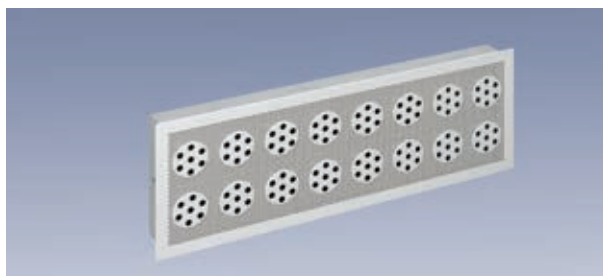


Figure 2: two rows, standard cover

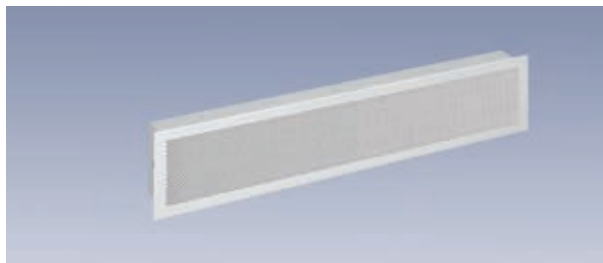


Figure 3: one row, design cover

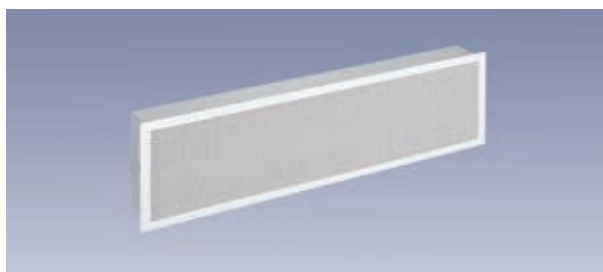
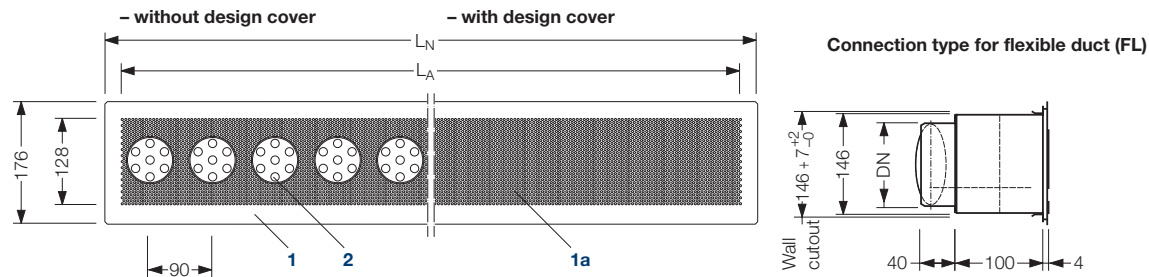


Figure 4: two rows, design cover

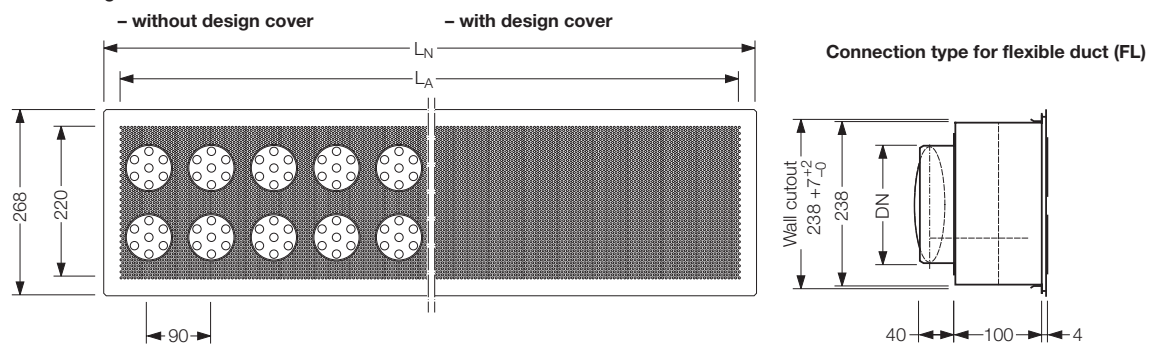
Broad Multiplex Outlet BF-V as return air inlet

Dimensions

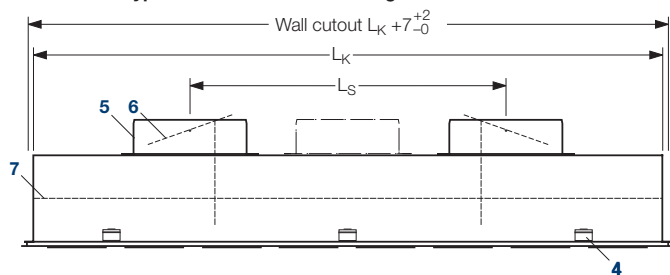
1-row design



2-row design



Connection type FL: 1-row and 2-row design



Key

- 1** Front plate
 - 1a** Perforated design cover
 - 2** Nozzle discs
 - 3** Connection box
 - 4** Push-in connection
 - 5** Connection spigot
- Sizes 800 and 1000: 2 connection spigots
 Size 600: 1 connection spigot, centered

Nominal length	Length				1 reihig		2 reihig	
	L _N	L _A	L _K	L _S	Nozzle discs	Connection spigot connection type	Nozzle discs	Connection spigot connection type
	mm	mm	mm	mm	Number pcs	FL n · DN	Number pcs	FL n · DN
600	580	533	554	—	6	1 · DN 125	12	1 · DN 200
800	760	713	734	367	8	2 · DN 125	16	2 · DN 180
1 000	940	893	914	457	10		20	2 · DN 200

Broad Multiplex Outlet BF-V as return air inlet

Sound power level and total pressure loss

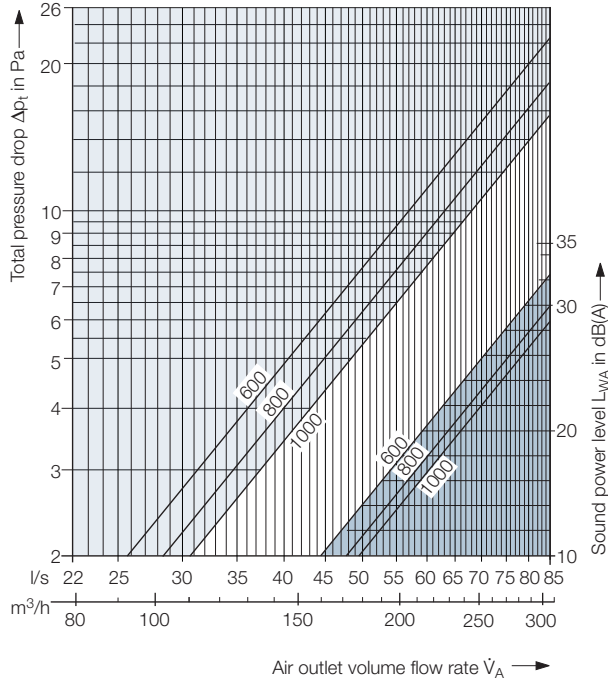
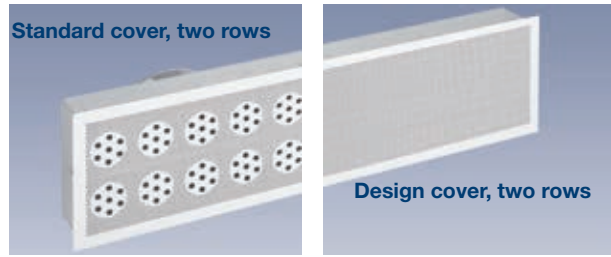
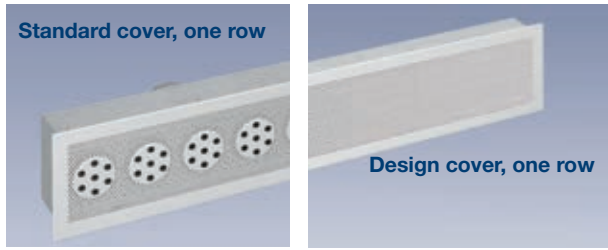


Diagram 1: one row, standard cover

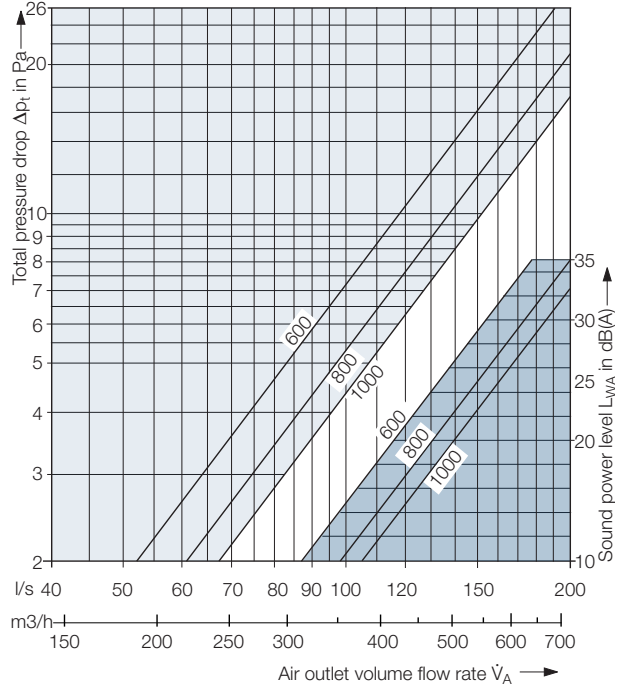


Diagram 3: two rows, standard cover

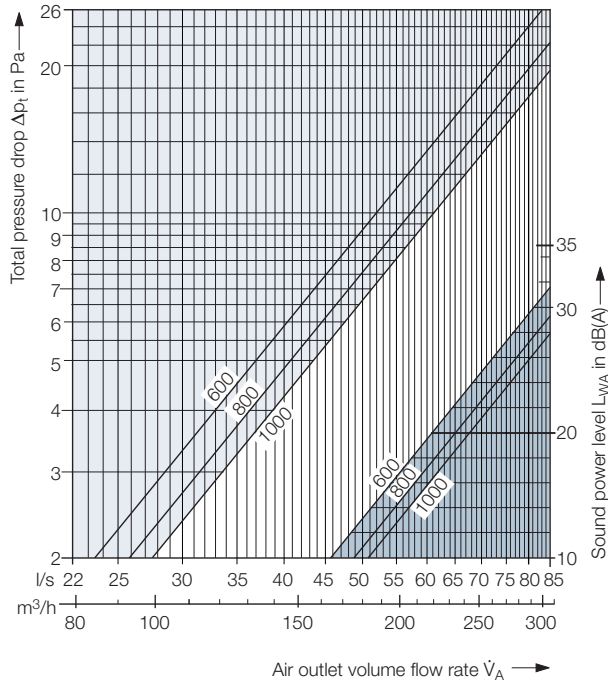


Diagram 2: one row, design cover

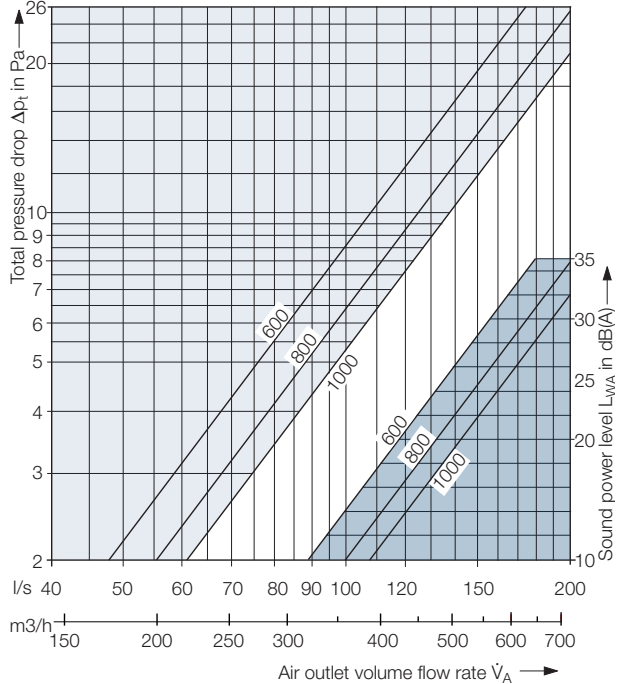
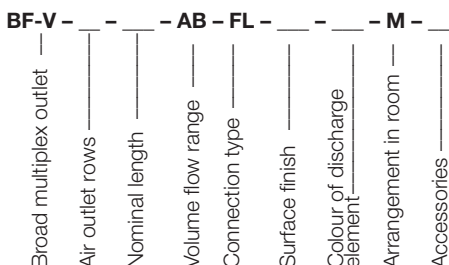


Diagram 4: two rows, design cover

Note: The measured values apply to the throttle position "open". When the throttle is closed, the pressure loss increases by 2 to 2.5 times. The sound power level increases by up to 8 dB (A). Sound power levels <10 dB are not listed.

Broad Multiplex Outlet BF-V as return air inlet

Type Code



Air outlet rows

- 1 = one row
- 2 = two rows

Nominal lengths

- 800 = nominal length 800
- 600 = nominal length 600
- 1000 = nominal length 1 000

Volume flow range

AB = return air

One row	Two rows
160 - 300 m ³ /h 44 - 83 l/s	300 - 700 m ³ /h 83 - 194 l/s

Connection type

FL = Flexible duct

Surface finish

9010 = Visible surface painted to RAL 9010, semi-matte ¹⁾

Colour of discharge element (orifice discs) ¹⁾

- S = black, similar to RAL 9005
- W = white, similar to RAL 9010

Arrangement in room

M = centered

Accessories

- O = without
- PF = with perforated design cover

Tender Text

.... units

Broad Multiplex Outlet as return air inlet for flush installation in the upper part of room wall, front plate optionally with perforated design cover or with integrated nozzle discs, visually identical to supply air outlet

Consisting of:

- perforated front panel, available in three nominal lengths, with integrated 2-part nozzle discs in 1 or 2-row design. Nozzle discs can be manually rotated individually by 360°;
- alternatively, the broad multiplex outlet can be equipped with a perforated design cover, which gives the air outlet a more pleasing look without impairing its function;
- Connection box with one or two connection spigots for connection to flexible duct (FL) including volume flow damper. Fastening the front plate to the connection box with a push-in connection.

Materials:

- Front plate made of galvanised sheet metal, visible surface coated according to RAL 9010, pure white¹⁾
- Two-part nozzle discs
 - Orifice discs made of polycarbonate (PC-GF-10-V0), colored similarly to RAL 9010, pure white, or to RAL 9005, deep black ¹⁾
 - Insert made of acrylic butadiene styrene ABS-V0, colored deep black, similar to RAL 9005.
- Perforated design cover made of galvanised sheet metal, visible surface coated according to RAL 9010, pure white ¹⁾
- Connection box made of galvanised sheet metal

Fabrikat: Krantz

Typ: BF-V - - - - AB - FL - - - - M - -

Subject to technical alteration.

¹⁾ Other colours upon request

Krantz GmbH

Uersfeld 24, 52072 Aachen, Germany

Phone: +49 241 441-1

Fax: +49 241 441-555

info@krantz.de | www.krantz.de

