



## Krantz

Ceiling air outlets  
Turbulent mixing air flow

Air Distribution Systems

*Krantz*

## From tradition, committed to the future

Clean air is fundamental to quality of life and health. It is therefore essential to be attentive to the air that we breathe on a daily basis. We take this task very seriously. With our state-of-the-art technology, we meet the highest demands for air distribution systems and the strictest requirements for air quality control.

**Krantz offers a wide range of the most diverse services related to air under one roof!**

#### 1 Ceiling air outlets

Radial slot outlet	3
Radial outlet	4 - 5
Adjustable radial outlet	6
Adjustable radial outlet with core tube	7
Variable twist outlet with guide ring	8
Variable twist outlet with jet straightener	9
Induction outlet with preset discharge direction	10
Adjustable induction outlet	11
Opticlean	12
Circular Opticlean	13
Product line Opticlean	14 - 15

1

#### Air Distribution Systems

#### Ceiling air outlets

- Sidewall air outlets
- Floor air outlets
- Displacement outlets for the commercial sector
- Displacement outlets for the industrial sector
- Air outlets for assembly rooms

#### Clean Air Solutions

Air Technologies  
(nuclear and  
conventional  
sectors)

#### Filter & Damper Systems

#### Research & Development

#### Cooling & Heating Systems

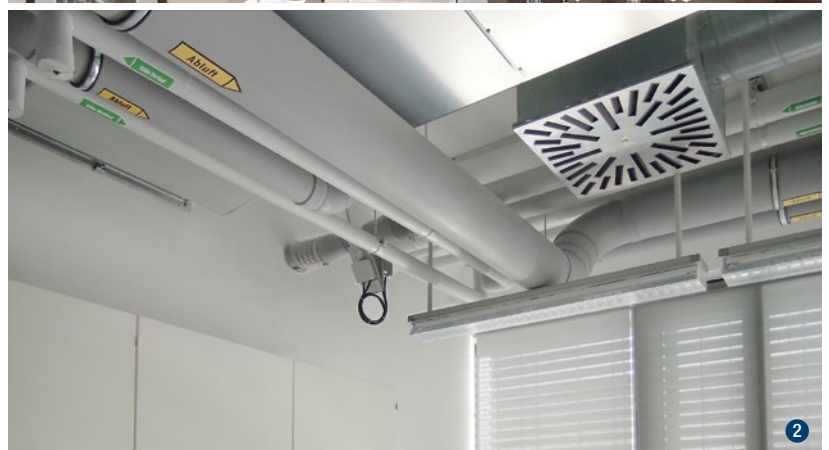
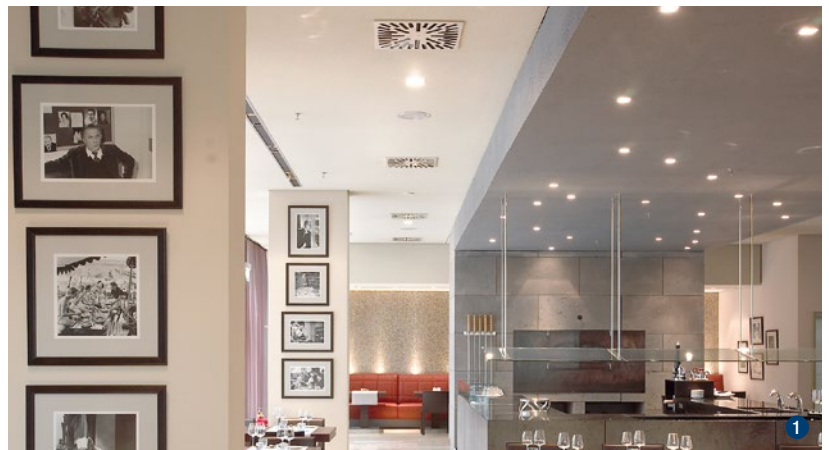


### Radial slot outlet RL-Q2 / RL-R2 Radial slot outlet RL-C2

#### Features:

- With square or circular face
- With square or circular bar array
- Radial jet dispersion
- Various bar segments can be closed, thus enabling asymmetric jet dispersion
- Convenient screw fastener from below
- Also available as return air inlet with/without bars

	RL-Q2/RL-R2	RL-C2
Volume flow rate range:	12.5 – 280 l/s [45 – 1 000 m <sup>3</sup> /h]	22 – 272 l/s [80 – 980 m <sup>3</sup> /h]
Square face:	300 – 625	
Sizes:		375, 470, 600 and 750
Discharge height:	2.5 – 4.5 m	



#### References:

- 1 Radisson SAS Hotel, Cologne
- 2 CRTD - Technical University of Dresden
- 3 Maul Belser, Nuremberg

## 1 Ceiling air outlets

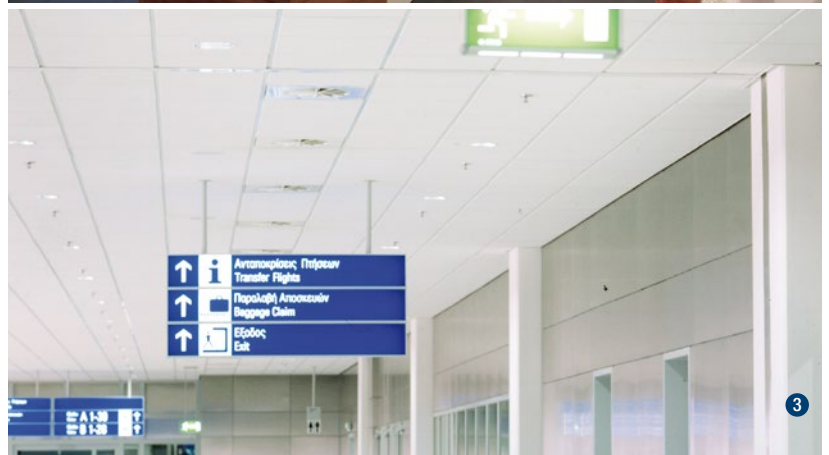


### Radial outlet RA-N

#### Features:

- Radial, horizontal jet dispersion
- With circular or square face
- Low height
- Connection to flexible tube or spiral-seam duct via adapter or connection box
- Convenient screw fastener from below
- Also available as return air inlet

	RA-N
Volume flow rate range:	11 – 555 l/s [40 – 2 000 m³/h]
Nominal sizes:	DN 100 to DN 500
Discharge height:	2.2 – 4.5 m



#### References:

- 1 MM Migro Schöntal-Center, Füllingdorf, Switzerland
- 2 Savings bank "Kreissparkasse", Cologne
- 3 Athens International Airport, Athens

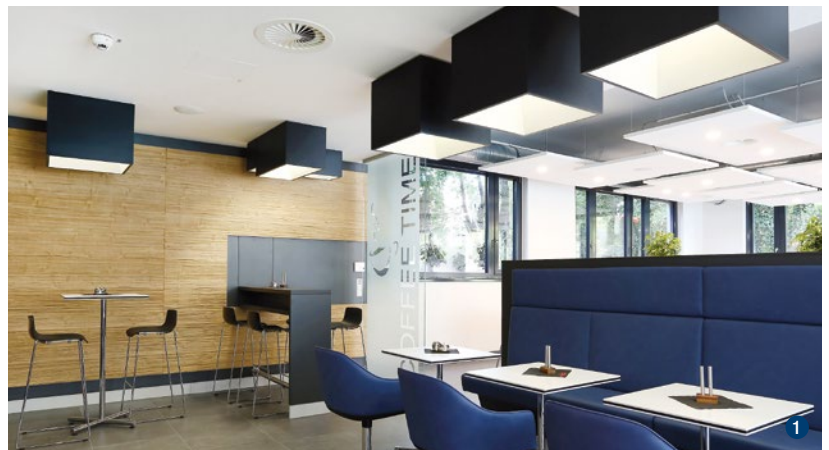


### Radial outlet RA-N3

#### Features:

- Radial, horizontal jet dispersion; therefore high level of thermal comfort
- Available in 2 sizes, with square or circular face
- High volume flow rate per size
- Low height
- Connection to flexible or spiral seam duct via reducer or connection box
- Easy screw fastening from below
- Can also be used as a return air inlet

RA-N3	
Volume flow rate range:	26 – 400 l/s [95 – 1 440 m <sup>3</sup> /h]
Nominal sizes:	DN 355 und DN 500
Discharge height:	2.4 – 4.5 m
Temperature differential:	–12 K to +5 K (+10 K up to 3 m ceiling height)



#### References:

- 1 Apparatus Construction Gaoting GmbH, Dresden
- 2 CRTD - Technical University of Dresden
- 3 Dreifaltigkeits-Hospital, Wesseling

## 1 Ceiling air outlets



### Adjustable radial outlet RA-V

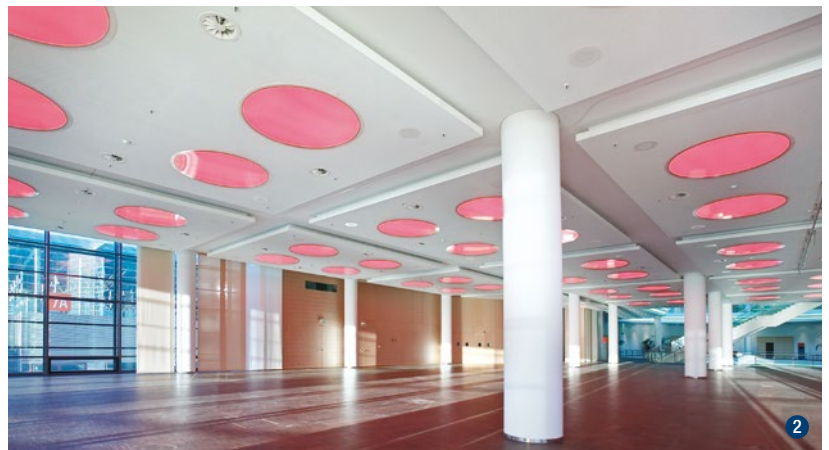
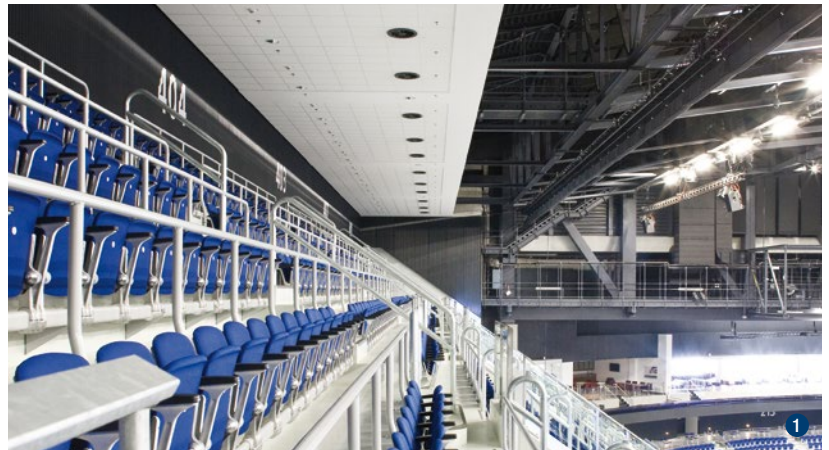
#### Features:

- Stepless discharge direction adjustment from horizontal to vertical, manually or with electric servomotor
- Radial jet dispersion
- Shorter heating-up period with vertical discharge direction
- Low design
- Large discharge heights

	RA-V
Volume flow rate range:	61 – 1 530 l/s [220 – 5 500 m <sup>3</sup> /h]
Nominal sizes:	DN 200 to DN 500
Discharge height:	2.5 – 13 m



Air jet pattern, vertical discharge (heating mode)



#### References:

- 1 O2 World, Berlin
- 2 Nuremberg Fairgrounds
- 3 Radisson SAS Hotel, Cologne

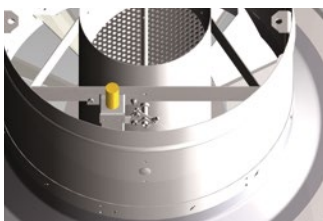


### Adjustable radial outlet with core tube RA-V2

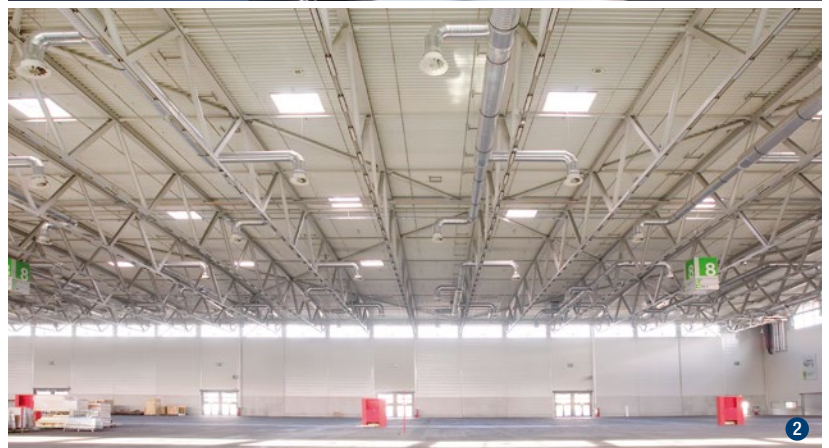
#### Features:

- Discharge direction adjustable from horizontal to vertical (downwards), manually or with electric servomotor
- Radial jet spread
- Shorter heating-up time due to vertical discharge
- Low design
- Large discharge heights

RA-V	
Volume flow rate range:	111 – 4 444 l/s [400 – 16 000 m³/h]
Nominal sizes:	DN 250 – DN 900
Discharge height:	2.8 – 15 m



Self-acting thermostatic control unit!  
High volume flow rates and discharge heights



#### References:

- 1 Office building, Bonn
- 2 Cologne Fairgrounds
- 3 Siemens, Amberg

## 1 Ceiling air outlets



### Variable twist outlet with guide ring DD-VL

#### Features:

- Adjustable discharge direction from horizontal to vertical, manually or with servomotor
- Radial jet dispersion
- Shorter heating-up period with vertical discharge direction
- Connection to spiral-seam duct or connection box
- Very large penetration depth when heating
- Low sound power level even with high volume flow rates

DD-VL	
Volume flow rate range:	170 – 3 055 l/s [600 – 11 000 m <sup>3</sup> /h]
Nominal sizes:	DN 315, DN 400, DN 500, DN 630 and DN 710
Discharge height:	3 – 10 m



Air jet pattern, vertical discharge (heating mode)



Air jet pattern, horizontal discharge (cooling mode)



#### References:

- 1 Bremen Fairgrounds
- 2 RTL Media Corner, Brussels
- 3 Cologne Fairgrounds





## Variable twist outlet with jet straightener DD-VG

### Features:

- Adjustable discharge direction from horizontal to vertical, manually or with servomotor
- Radial jet dispersion
- Shorter heating-up period with vertical discharge direction
- Connection to spiral-seam duct or connection box
- Same construction as DD-VL, but in addition with jet straightener
- Very large penetration depth when heating

	DD-VG
Volume flow rate range:	170 – 3 055 l/s [600 – 11 000 m <sup>3</sup> /h]
Nominal sizes:	DN 315, DN 400, DN 500, DN 630 and DN 710
Discharge height:	3 – 28 m



Air jet pattern



### References:

- 1 Lufthansa AG, Hamburg
- 2 Post Sorteercentrum, Antwerpen
- 3 Freiburg Fairgrounds

## 1 Ceiling air outlets



### Induction outlet with preset discharge direction IN-N6

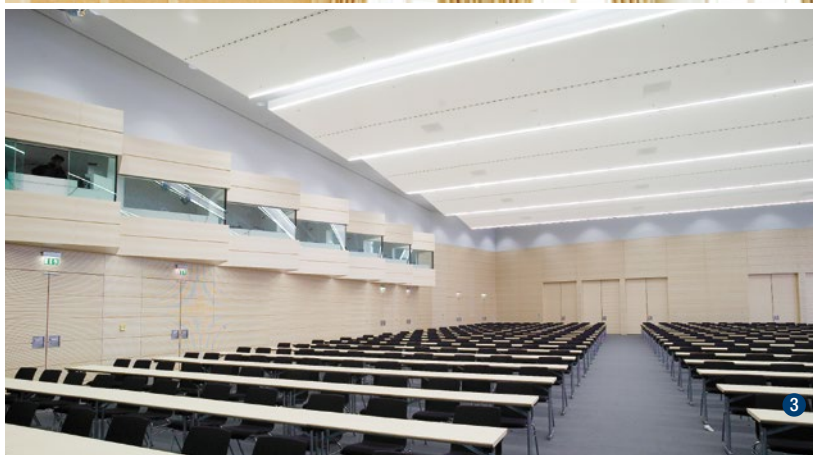
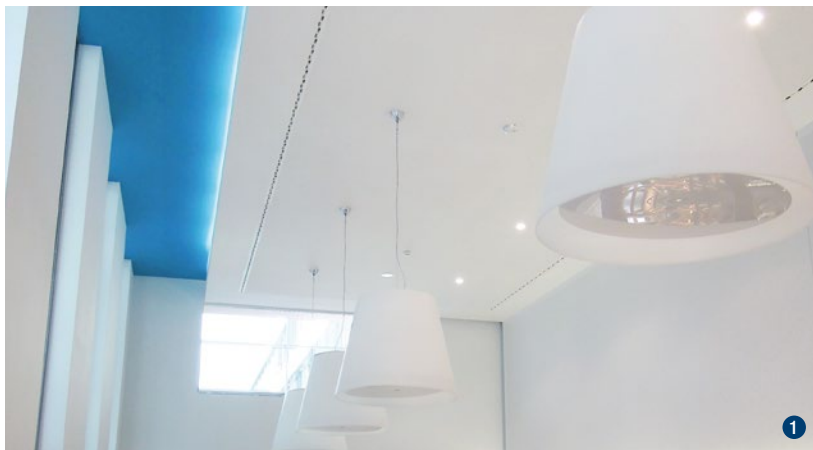
#### Features:

- Stable single jets for alternating or one-sided inclined discharge, even under reduced volume flow rates, for all ceilings
- Fixed discharge angle of 45° to horizontal
- With connection box and circular connection spigot
- Momentum control device manually adjustable for the optimum adjustment of jet momentum for designing volume flow rate, and for setting one-sided air discharge at half volume flow rate
- Mounting height up to 7 m when heating

IN-N6	
Volume flow rate range:	28 – 85 l/(s·m) [100 – 300 m³/(h·m)]
Element width:	90 mm
Standard lengths:	1, 1.2 and 1.6 m
Discharge height:	4 – 7 m



Air jet pattern



#### References:

- 1 CRTD - Technical University of Dresden
- 2 Guest House Petersberg, Bonn
- 3 Nuremberg Fairgrounds



### Adjustable induction outlet IN-V

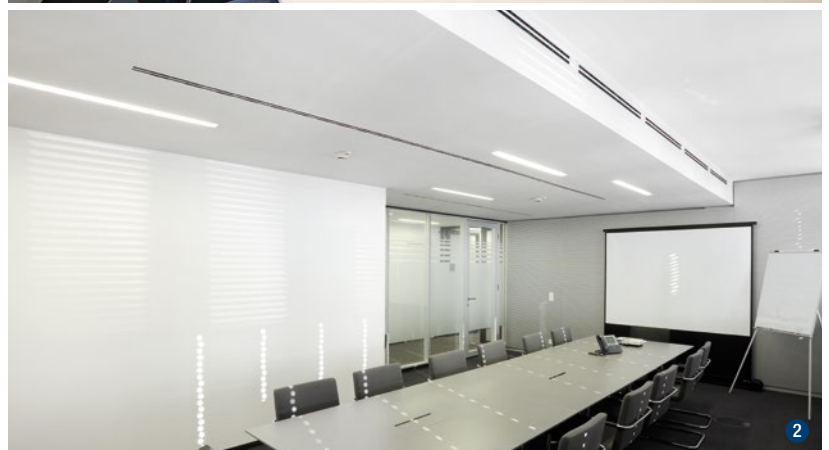
#### Features:

- Stable single jets with alternate or one-sided discharge, for all ceilings
- Discharge direction adjustment from horizontal to nearly vertical
- Type IN-V2: element width: 28 mm per row; also available in 2, 3 or 4 rows
- Type IN-V3: element width: 15 mm; 1 row
- With connection box and circular connection spigot
- Also available as return air inlet
- Separated installation possible in plasterboard

IN-V	
Volume flow rate range:	2.8 – 110 l/(s·m) [10 – 400 m³/(h·m)]
Element width:	15 or 28 mm
Lengths:	1 050 mm or flexible
Discharge height:	2.5 – 5 m



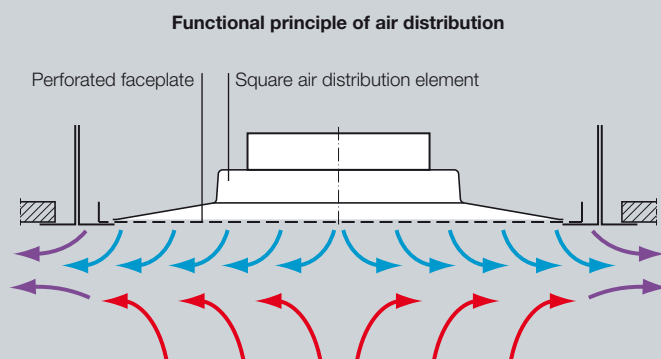
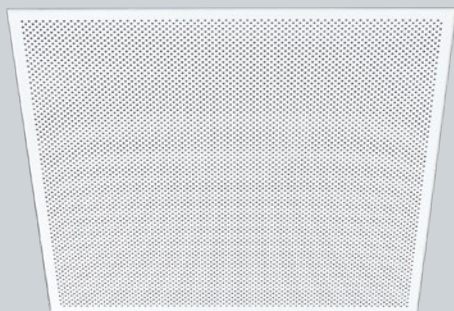
Air jet pattern, discharge angle approx. 45°



#### References:

- 1 Apparatus Construction Gauting GmbH, Dresden
- 2 Office building, Cologne
- 3 MARITIM Hotel, Dresden

## 1 Ceiling air outlets

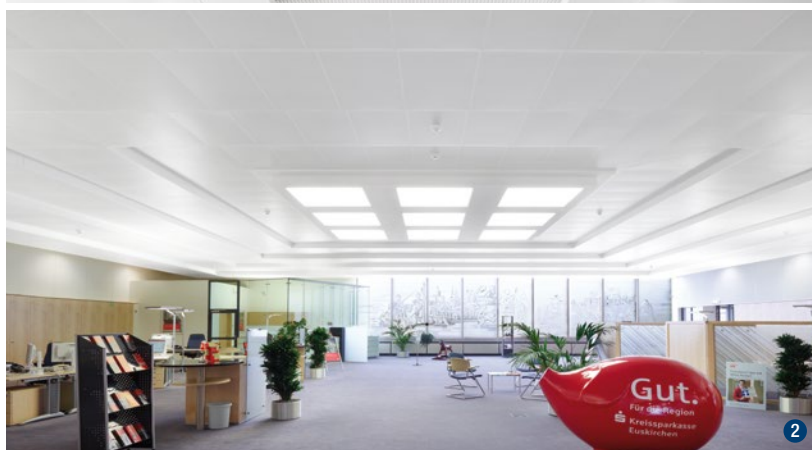


## Opticlean OC-Q

### Features:

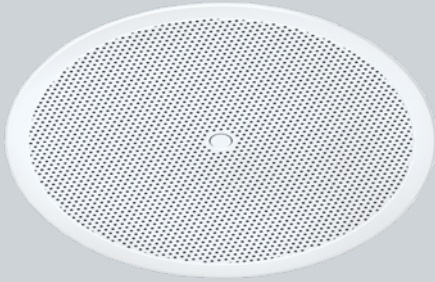
- Radial, horizontal jet spread at high level of thermal comfort
- Perforated square face, grid dimensions: 600 x 600 mm and 625 x 625 mm
- Square design for integration into gypsum board ceilings
- Very uniform air discharge; as a result, no or extremely low dirt accumulation on the ceiling
- Segment covers enable supply air distribution to be adapted to room geometry, e.g. a narrow corridor with 180° discharge

	OC-Q
Volume flow rate range:	11 – 239 l/s [40 – 860 m³/h]
6 sizes:	215, 270, 330, 400, 500, 600, 625
Discharge height:	2.5 – 4.5 m



### References:

- 1 John Deere European Parts Distribution Center, Bruchsal
- 2 Savings bank "Kreissparkasse", Euskirchen
- 3 Office building, Dreieich



### Circular Opticlean OC-R

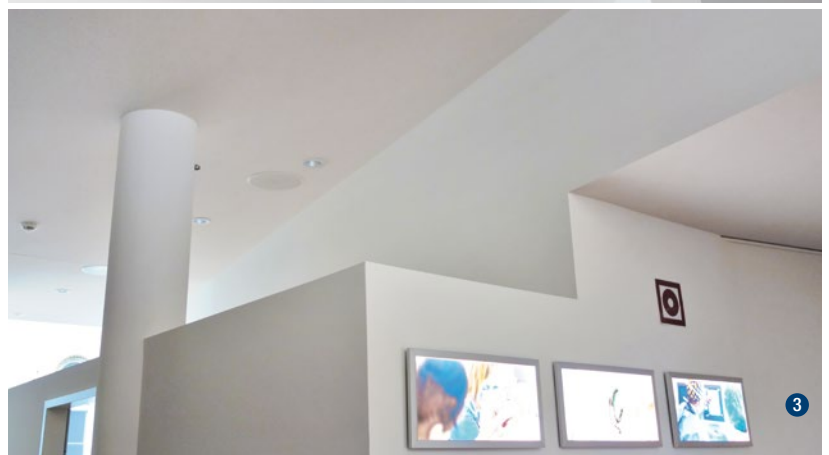
#### Features:

- Steady radial jet spread resulting in high thermal comfort
- Perforated circular faceplate, hole diameter 3 mm
- Strong reduction of dirt accumulation on the ceiling thanks to very even air distribution and the resulting air cushion
- Unobtrusive integration into suspended ceilings
- Also usable as return air inlet

	OC-R
Volume flow rate range:	25 – 169 l/s [90 – 610 m³/h ]
Sizes:	300 and 500
Discharge height:	2.5 – 4.5 m



Air jet pattern



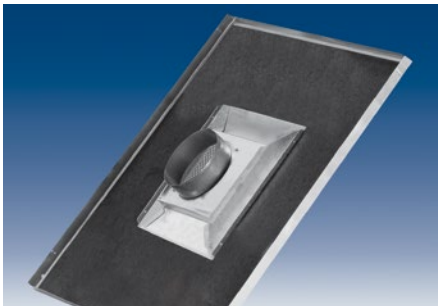
#### References:

1 - 3 Catholic Marienhospital, Hamburg

## 1 Ceiling air outlets



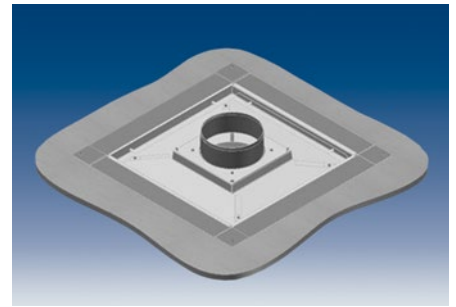
### Opticlean – the solution for a comfortable thermal environment



Opticlean OC-Q with square faceplate



Opticlean OC-R with circular faceplate



Opticlean OC-Q – installation with mounting frame for gypsum board ceiling

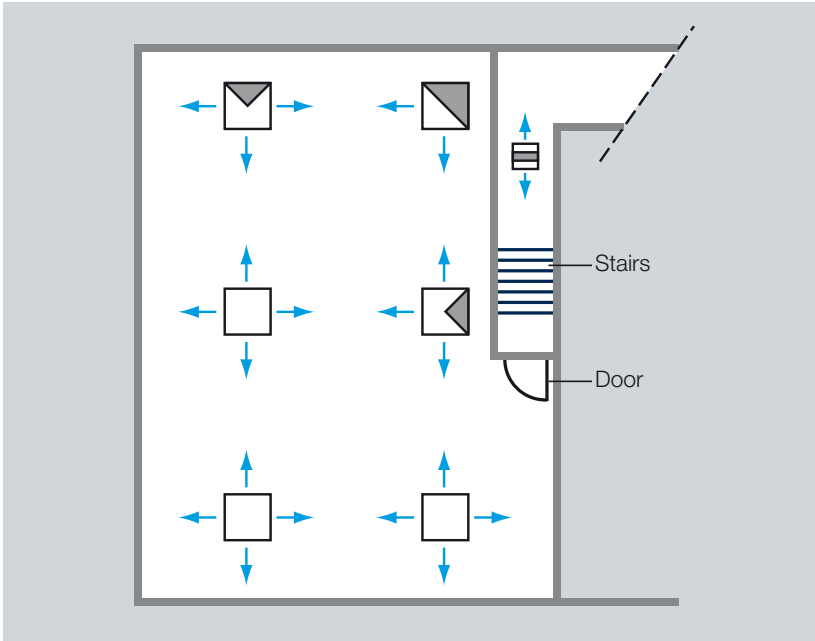
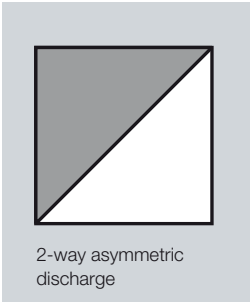
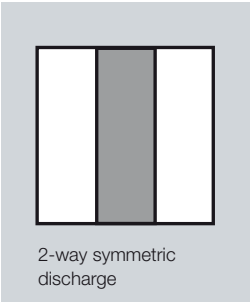
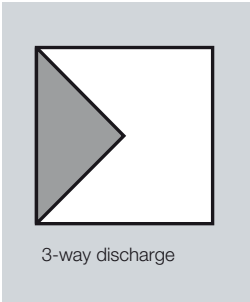
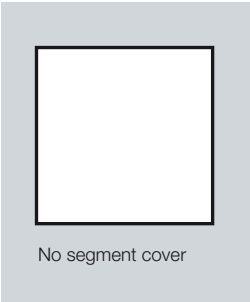
#### References:

- 1 Liebherr-Werk Ehingen GmbH, Ehingen
  - 2 Spreedreieck Berlin
- Photographer: Foto Krumnow, Bannewitz, Architektur-, Industrie- und Werbefotografie





1



Principle sketch of Opticlean air outlets with segment covers to adapt the discharge pattern

References:

- 1 Krantz GmbH, Aachen
- 2 Opticlean – Installation in plasterboard ceiling in a retirement and nursing home



2



**Krantz GmbH**

Uersfeld 24, 52072 Aachen, Germany  
Phone: +49 241 441-1, Fax: +49 241 441-555  
info@krantz.de, [www.krantz.de](http://www.krantz.de)

The logo for Krantz, featuring the word "Krantz" in a stylized, blue, cursive script font.